

The Hamble Lane Air Quality Action Plan

HAMBLE LANE

Covering the area between Windhover Roundabout to Portsmouth Road



Draft Air Quality Action Plan Consultation

January 2011 to February 2011

Summary Document

Environmental Health Service



INTRODUCTION

Eastleigh Borough Council's (EBC) Environmental Health Service has responsibility for implementing the air quality requirements of the Environment Act 1995. As part of this responsibility the Environmental Health Service undertakes monitoring of air quality within the Borough and regularly produces reports on this data.

The Council is required to regularly carry out a 'Review and Assessment' of local air quality. This includes monitoring air quality in the local area. If it is likely that the air quality will not reach National targets, an 'Air Quality Management Area' must be declared and an 'Action Plan' to improve air quality is prepared. The area of Hamble Lane, as shown in the attached map, does not meet the air quality standard and has been declared an Air Quality Management area.

HAMBLE LANE AIR QUALITY MANAGEMENT

The attached map shows the area covered by the Air Quality Management Area (AQMA). The Council Declared the AQMA in November 2010 due to the levels of air pollution being above the national target. The AQMA covers Hamble Lane from the Windhover Roundabout to its junction with Portsmouth Road. The boundaries of the AQMA extend 10m either side of these roads.

THE HEALTH EFFECTS OF AIR POLLUTION

The Expert Panel on Air Quality Standards (EPAQS) have studied the effects of nitrogen dioxide on human health and have raised concerns about exposure at lower levels, such as those found in towns and cities. It is thought that this type of exposure may have acute short-term and chronic long-term effects on health. Sensitive individuals such as those suffering from asthma are likely to be the first to notice the effects of moderate air pollution. At high levels those who are not normally sensitive may notice eye irritation. EPAQS therefore set levels for nitrogen dioxide in the air based on effects on human health. These levels are assessed in areas where people live and where there are schools, hospitals etc. We have not met the acceptable levels in Hamble Lane.



CURRENT AIR POLLUTION LEVELS

The National Guidelines from DEFRA require levels of air pollution to be below 40 ug/m³. Currently the annual level for this section of Hamble Lane is 52ug/m³.

THE ACTION PLAN

The principle aim of the Hamble Lane Action Plan is to establish local measures to improve air quality in the Air Quality Management Area. The measures are considered on the grounds of their air quality improvement, impacts on noise, climate change, cost effectiveness and feasibility.

Other aims of the Action Plan include:

- To calculate how much each source (cars, Heavy Duty Vehicle's, others) contributes.
- Establish the improvements required in order to meet the National target.
- Establish the impacts of each of these measures. both in terms of air quality and for other impacts such as noise.



Emission Testing at Lakeside Country Park

Proposed actions to improve air quality are listed below. Most of the actions relate to reducing vehicle use, improving traffic flows and increasing use and reliability of public transport.

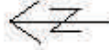
- Increase the use of public transport, walking and cycling.
- Improve the cycle network
- Continue to encourage school travel planning
- Improve the flow of traffic on Hamble Lane
- Reduce congestion at the Portsmouth Road Junction
- Promote sustainable, low vehicle housing developments
- Work with local businesses to reduce vehicle movements by effective fleet management.
- Work with public transport providers to improve services.
- Support the Hampshire County carshare program
- Improvement of pedestrian routes along and away from Hamble Lane
- Detailed analysis of traffic movements to establish the worst polluters
- Carrying out Vehicle emission testing to raise public awareness
- Real-time air pollution monitoring
- Reduction of vegetation or replacement with pollution absorbing plants
- Realtime monitoring of congestion



Scale: 1:4500

Map Ref SU4710NE

Date 26/01/2011



EASTLEIGH
BOROUGH COUNCIL

Reproduced from the Ordnance Survey map held with the permission of Her Majesty's Stationery Office. Crown copyright. Unauthorised reproduction in any form without the permission of the Controller of Her Majesty's Stationery Office is prohibited. Licence No. 100019622 (2011)

HOW TO COMMENT

The Council would like your views for the Hamble Lane Action Plan. In particular we would like you to tell us the following:

1. What are the **top three** actions you would like to see?
2. Are there any actions which you **do not** agree with?
3. Are there any actions you would like to see, which we have **not** included?
4. Any other comments you have?

We would prefer to receive your comments **in writing** and we have included the attached reply sheet for you to answer the above questions. Please write your comments then just put it in the postbox, no stamp required.

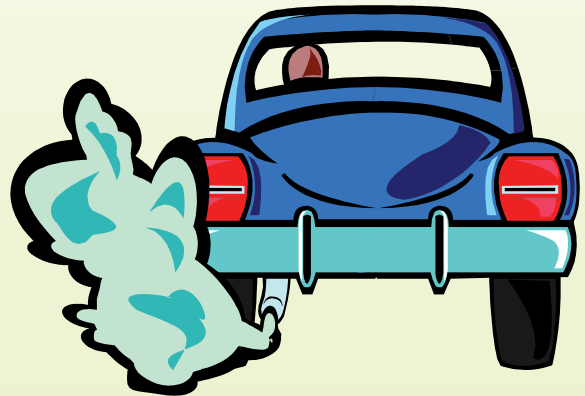
Alternatively you can email us your views, please title your email '**Hamble Lane Air Quality Action Plan**'

Unfortunately we are unable to take your comments over the telephone, but we are happy to answer any questions.

HOW TO CONTACT US:

Head of Environmental Health
Eastleigh Borough Council
Civic Offices
Leigh Road
Eastleigh
SO50 9YN
Telephone: 02380 688459
Fax: 02380 615224
Email: eh@eastleigh.gov.uk

The consultation period is running from the January 2011 to the 9th March 2011. Please send us your comments before the end of the consultation period for your views to be taken into account.



WHAT NEXT?

Following this consultation with the public, local businesses and 'Defra', the Council will be considering the responses and preparing a final version of the Action Plan. This will then be adopted by the Council and work will begin to implement the actions (if work has not already begun). We will be publishing progress reports periodically and information will also be posted on our website or in the 'Borough News'. If you have any questions or would like further information we would be happy to help you.



